

Commercial
NinetyFive
340

Commercial
NinetyFive
340FR

**The most trusted
HDPE shade
fabric in the
industry.**



**Architectural
SHADE FABRIC**

**Tension Structures
Awnings
Shade Sails
Car Park Structures**

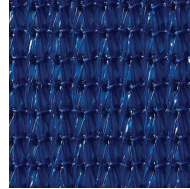
Commercial NinetyFive 340

Commercial Ninety-Five 340 delivers the utmost in versatility across a wide range of applications.

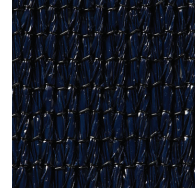
Provides the optimal combination of sun protection, strength and durability to ensure low maintenance and long-life performance.

The most expansive color assortment in the HDPE shade fabric market. Offering 22 rich, vibrant and on-trend colors to fulfill a wide range of design requirements.

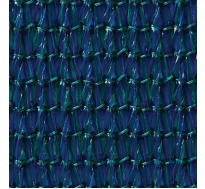
A mid-weight fabric (340 gsm) suitable for applications spanning a wide array of sizes and designs, making Commercial Ninety-Five 340 one of the most versatile HDPE shade fabrics in the industry.



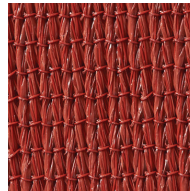
Aquatic Blue
444938
495671



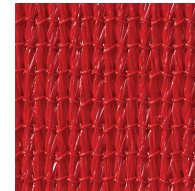
Navy Blue
445010
495602



Turquoise
445065
495664



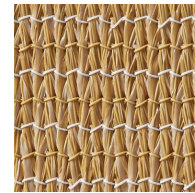
Cayenne
455255
495701



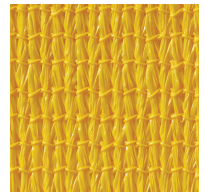
Cherry Red
444976
495695



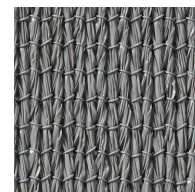
Orange
459215
495633



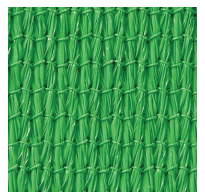
Desert Sand
444983
495565



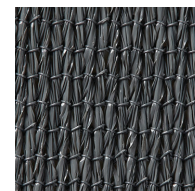
Yellow
445072
495619



Steel Grey
445041
495718



Bright Green
459208
495596



Gun Metal
455262
495527



Natural
445003
495541

Backed by a full
10-year warranty
against UV
degradation

Designed to
withstand the
world's harshest
environments

Commercial NinetyFive 340FR

Durability and FR compliance are now combined to create premium fabrics providing maximum performance.

Only GALE Pacific offers the **WIDEST RANGE** of **FLAME RETARDANT** knitted fabrics globally.

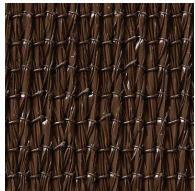
Our FR fabrics meet the most stringent Fire Standards for shade fabrics including CSFM 1237.1 & NFPA 701 across all color variants. Offering premium biaxial stability and tensile properties, for minimal maintenance and improved fabric life.



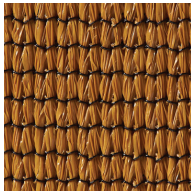
Royal Purple
459185
495725



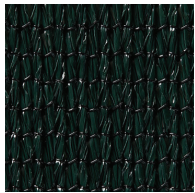
Deep Ochre
444990
495688



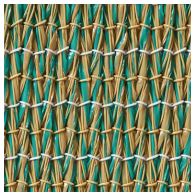
Brown
481254
495657



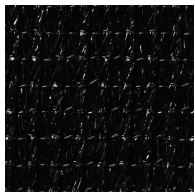
Cedar
465360
495534



Brunswick Green
444952
495572



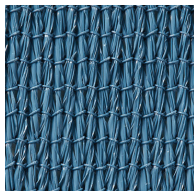
Rivergum
445027
495589



Black
444945
495640



Charcoal
444969
495558



Sky Blue
445034
495626



White
497736
495732



Industry-leading stentering process provides premium lay flat characteristics

A mid-weight fabric suitable for a wide array of applications and designs

AS Standards

ASTM Standards

Performance

	Commercial 95 340	Commercial 95 340 FR
Maximum force	warp 670 N/50mm	580 N/50mm
Elongation at max. force	warp 117%	98%
Maximum force	weft 2400 N/50mm	2000 N/50mm
Elongation at max. force	weft 83%	71.5%
Breaking force	warp 990 N	930 N
Breaking force	weft 2000 N	2000 N
Tear strength	warp 184 N	194 N
Tear strength	weft 347 N	282 N
Bursting pressure	3500 kPa	3600 kPa
Bursting force	1937 N	1944 N

	Commercial 95 340	Commercial 95 340 FR
Maximum force	warp 189.1 lbf	158.6 lbf
Elongation at max. force	warp 103.67%	88.7%
Maximum force	weft 462.3 lbf	412.3 lbf
Elongation at max. force	weft 63%	49%
Breaking force		
Breaking force		
Tear strength	warp 52.2 lbf	43 lbf
Tear strength	weft 52.2 lbf	39.6 lbf
Bursting pressure		
Bursting force	422 lbf	408 lbf

Fabric Properties

	Commercial 95 340	Commercial 95 340 FR	Commercial 95 340	Commercial 95 340 FR
Nominal Fabric Mass	340 gsm ± 20	340 gsm ± 20	340 gsm ± 20	340 gsm ± 20

Roll Specification

	Commercial 95 340	Commercial 95 340 FR	Commercial 95 340	Commercial 95 340 FR
Width	3m (folded)	3m (folded)	9 ft. 10 in. (folded)	9 ft. 10 in. (folded)
Length	40m	40m	131 ft. 3 in.	131 ft. 3 in.

Flammability Info

	Commercial 95 340	Commercial 95 340 FR	Commercial 95 340	Commercial 95 340 FR
Flammability Index - 12	Flammability Index - 12	Flammability Index - 1		
Ingnitability Index - 10	Ingnitability Index - 10	Ingnitability Index - 13		
Spread of Flame Index - 7	Spread of Flame Index - 7	Spread of Flame Index - 8		
Heat Evolved Index - 5	Heat Evolved Index - 5	Heat Evolved Index - 3		
Smoke Developed Index - 4	Smoke Developed Index - 4	Smoke Developed Index - 6		
			ASTM E84 19B Class A	CSFM Title 19 1237.1 NFPA 701 Test Methods 1&2 ASTM E84 19B Class A



*The results listed in this brochure are typical averages from independent testing and quality assurance testing and are not to be taken as a minimum specification nor as forming any contract between GALE Pacific and another party. Due to continuous product improvement, refer to the GALE Pacific Commercial Fabrics website for latest technical performance information.

¹ Please note, Check with your local waste handler to confirm recyclability

² Please note, Oeko-Tex & Greenguard applicable to non FR products only

* Please note, due to limitations of the printing process, colors pictured may not represent the true color



Gale Pacific AU
145 Woodlands Drive,
Braeside Victoria 3195
Toll Free: 1 800 331 521

Gale Pacific USA
285 West Central Parkway, Ste. 1704
Altamonte Springs, FL 32714
Toll Free: 1 800 560 4667

Gale Pacific MENA
JAFZA 15, 6th Floor, Room 604,
Jebel Ali Free Zone
Dubai, United Arab Emirates
+971 4 881 7114

Gale Pacific EURASIA
+44 7388 779124

galecommercial.com